



ELEVATED LIVING  
**haique**

Live Luxurious. Live Elevated





*If you thought stone was ancient, think again.*

*We have made stone fashionable.*



# FUTURE OF QUARTZ

Haique is the world's first fashion brand for Quartz Surfaces. Inspired by the ever-changing global culture, color trends, and living choices, Haique creates premium quartz surfaces for diverse tastes and styles.

Engineered Quartz Surfaces by Haique are the largest of seamless slabs in the world. With an infusion of spectacular design, colors, and patterns, Haique quartz surfaces are designed to elevate living.

# THE COLLECTION

Inspired by the five fashion capitals of the world:  
Paris, Milan, New York, London and Tokyo,  
we have captured the essence of these fashion  
capitals and reflected it in our collection  
redefining luxury.

THE  
**LONDON**  
COLLECTION

Kensington White >



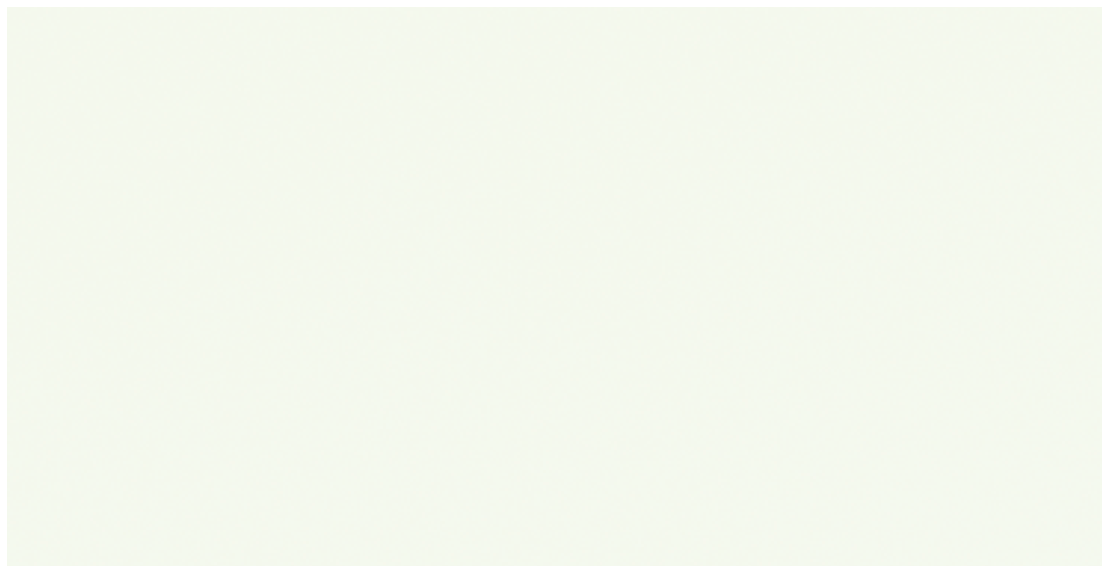


THE  
**LONDON**  
COLLECTION

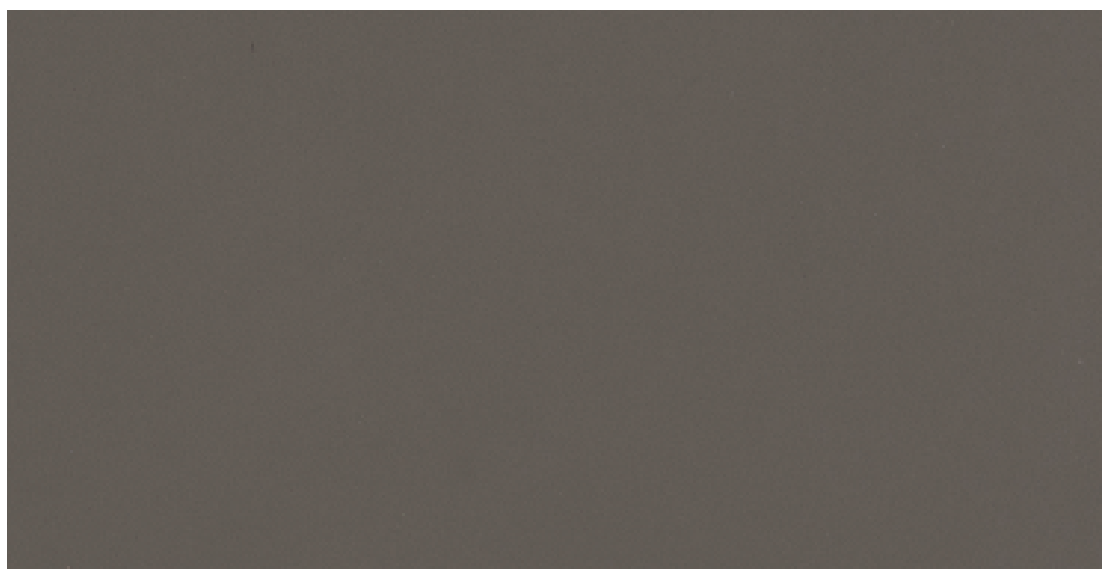
Understated elegance with classic colors and designs.

The London Collection intertwines the style of Royal Ascot with a subtle Oxford lifestyle in 6 muted colors and designs.





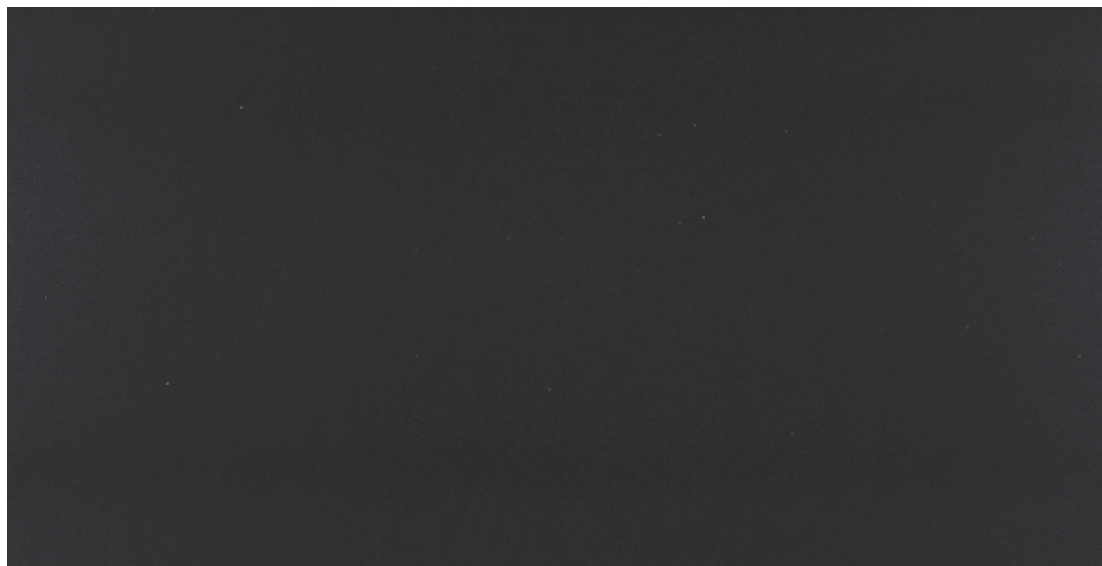
Kensington White



Brighton Brown



Mayfair Black



Mayfair Black



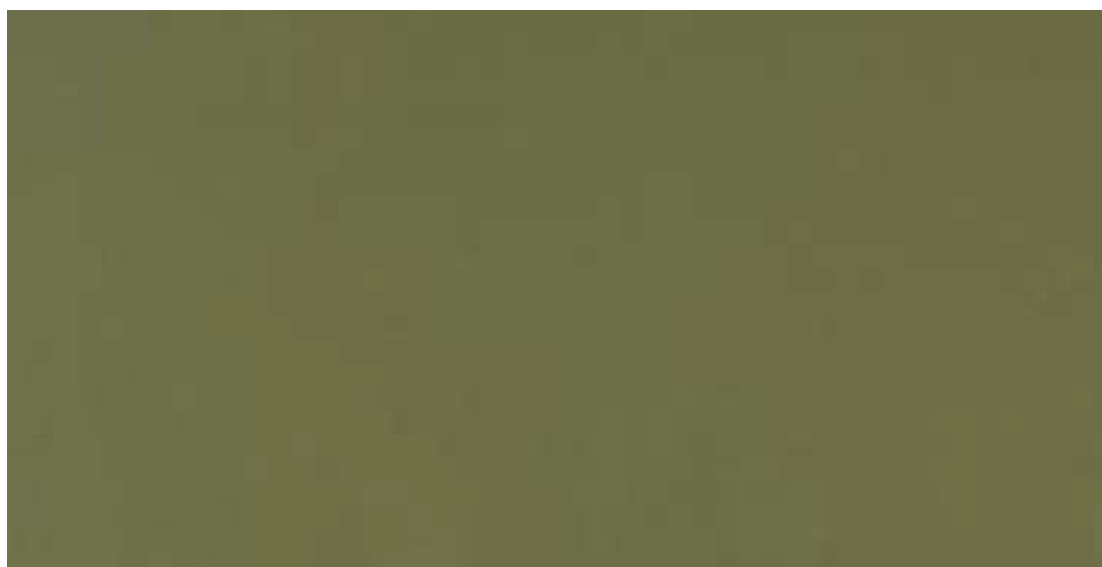
Chancery Silver



Barbican Grey



Barbican Grey



Epping Green



Chancery Silver



THE  
**MILAN**  
COLLECTION

BoticelliUltimo >







ELEVATED LIVING  
**haique**

THE  
**MILAN**  
COLLECTION

Luxury steeped in History.

The Milan Collection embraces the majesty of Greco-Roman architecture and the most elegant Italian marble captured in Quartz.



Caravaggio Pearl



Vinci Eterno



Boticelli Ultimo

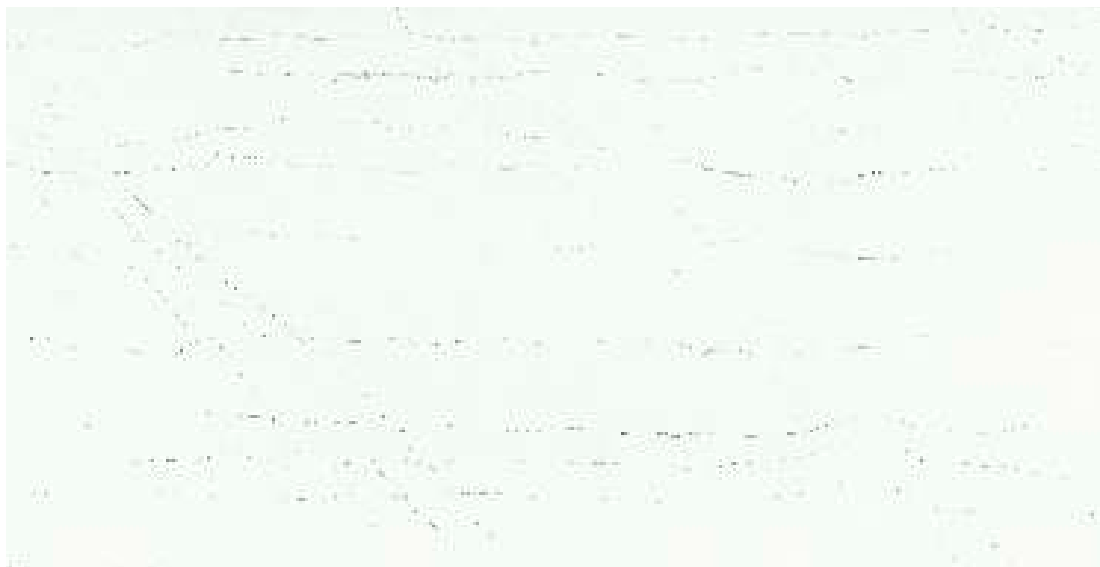


Raphael Pieta



Boticelli Ultimo

Lupa White

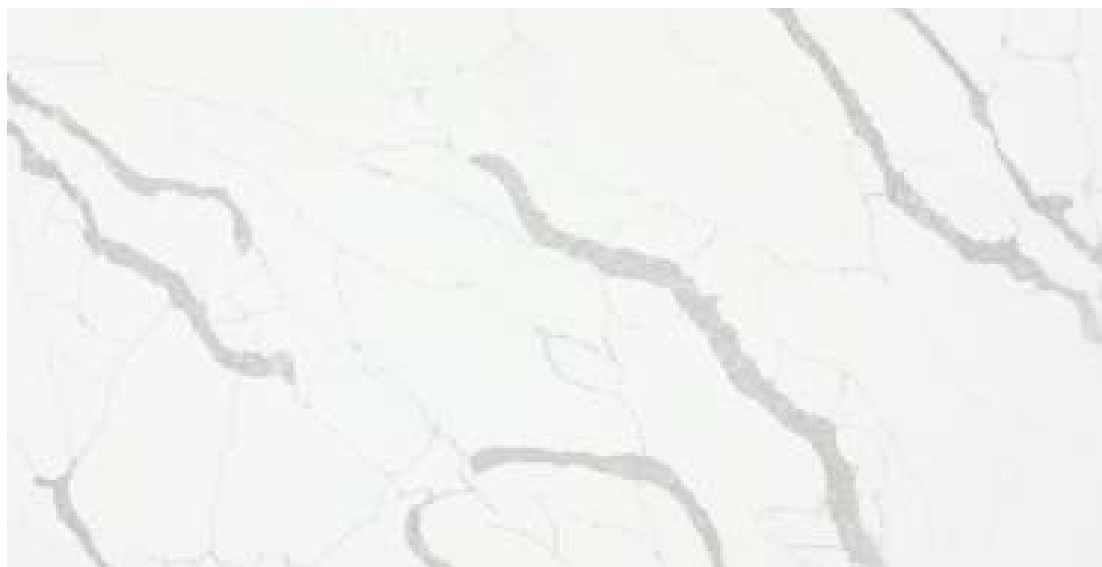


Boticelli Nuovo





Maestro Grey



Maestro Beige

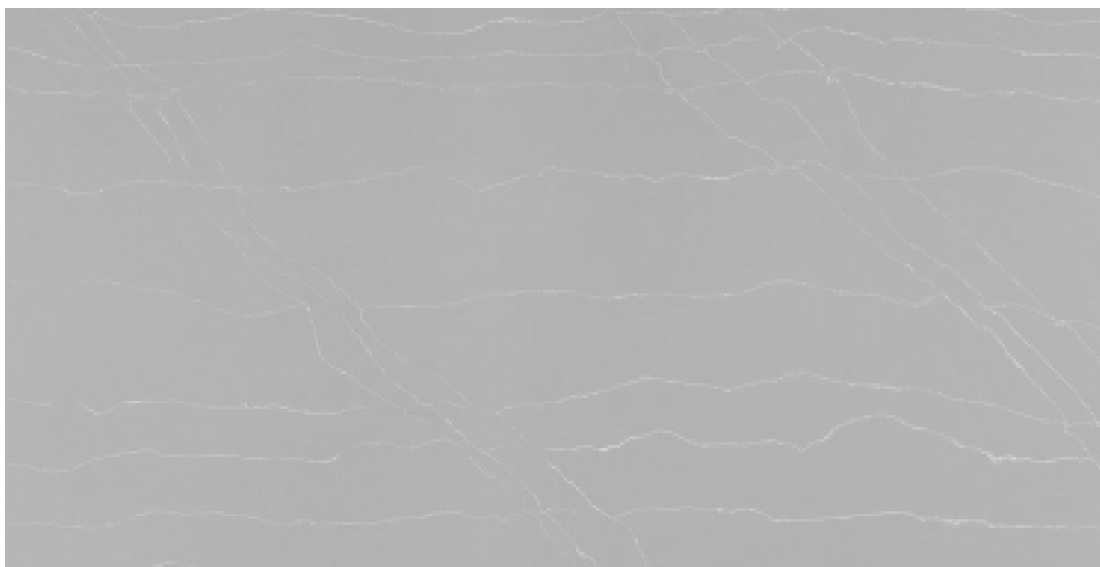


Raphael Madonna





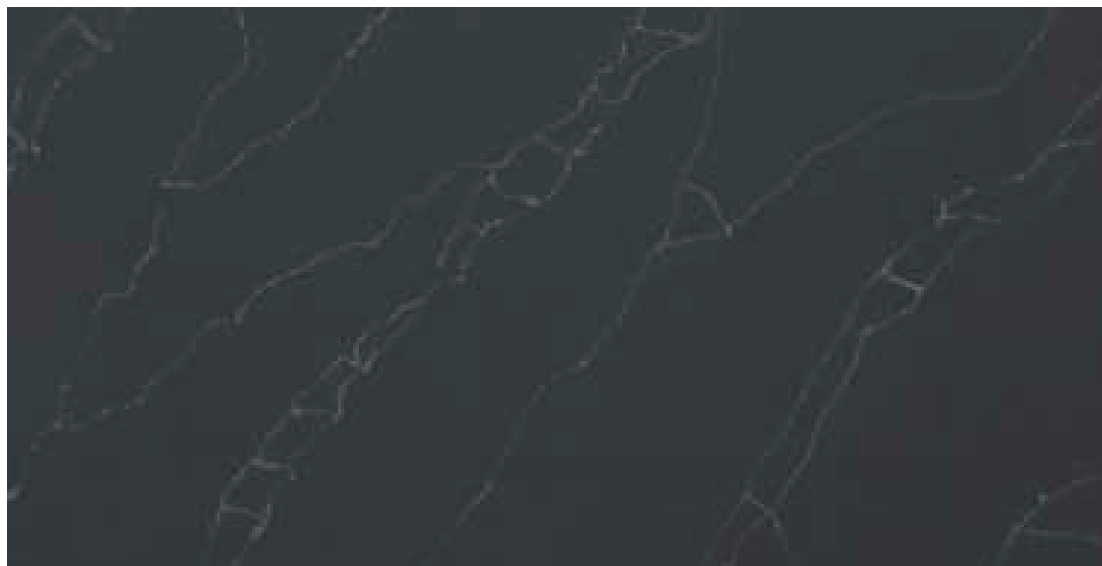
Raphael Madonna



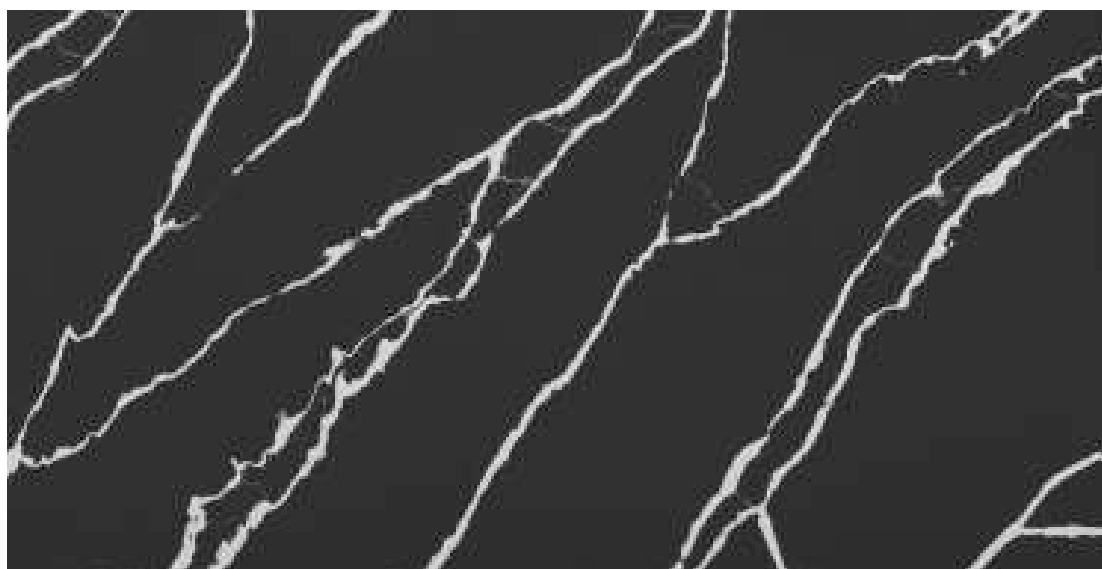
Lupa Grey



Raphael Ultimo



Raphael Ultimo



Profundo Black

Marmo Bernini



Marmo Rinaldi





Boticelli Rhino



Navigli

Vittoria



Del Monte





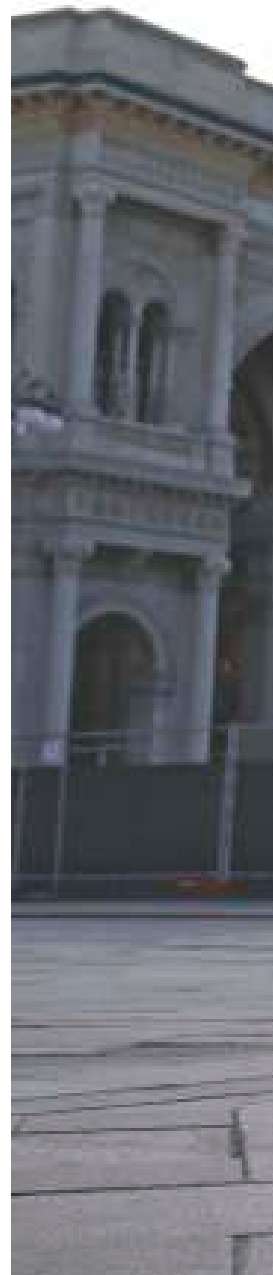
Laza Grey



Panda White



Boticelli Primo







THE  
**NEW YORK**  
COLLECTION

MetRedCrystal >



ELEVATED LIVING  
**haique**



THE  
**NEW YORK**  
COLLECTION

Functional but Modern. Fun but Bold.

The New York Collection captures the soul of Manhattan living, depicting a fusion of different cultural influences in 9 colors. It reflects a sense of allure and sophistication that takes us back to the Studio54 era.



Hamptons Beige



Harlem Brown Crystal

Flatiron Black Crystal



Hudson Blue





Hudson Blue

Tribeca Plum



Met Red Crystal







Met Red Crystal



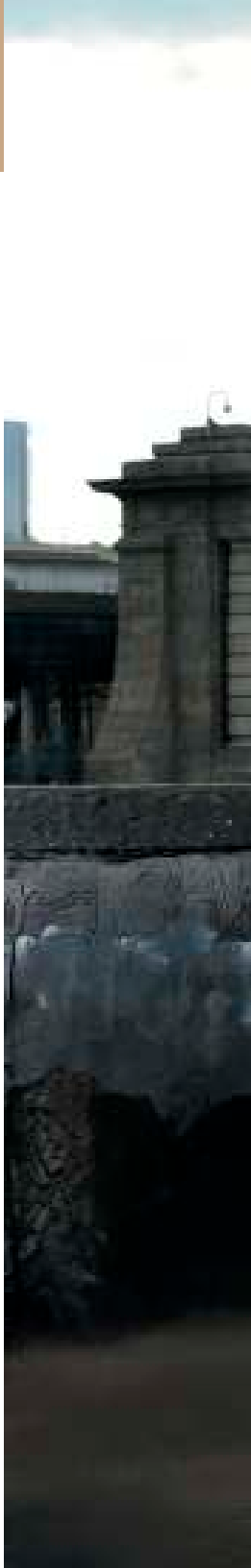
Soho White



Empire Grey



Empire Grey



ELEVATED LIVING  
**haique**



THE  
**PARIS**  
COLLECTION

MatisseBlack >



ELEVATED LIVING  
**haique**



THE  
**PARIS**  
COLLECTION

African influences meet Italian Classicism.  
The Avant-Gardé meets Retro.

The Paris Collection is a melting pot of cultures and styles with 12 exclusive designs of eclectic patterns, finishes, and colors that bring joie de vivre to interior spaces.





Pantheon Beige



Trocadero White



Palais White



Palais White



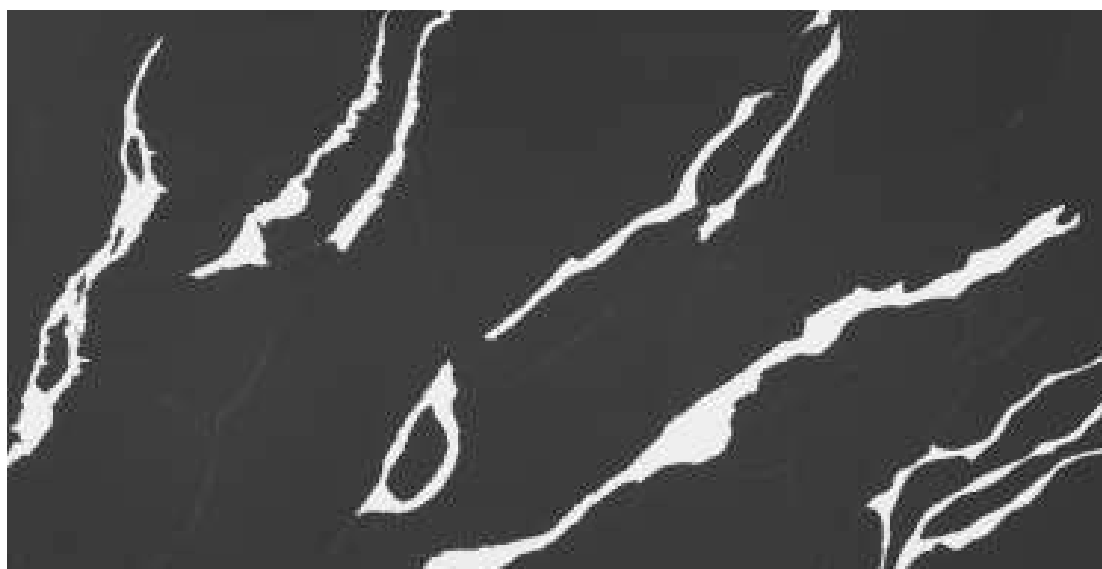
Papier White



Matisse Black



Matisse Black



Matisse White

Trocadero Black



Bastille Black





Bastille Black

Corbusier Grey



Mont Venise





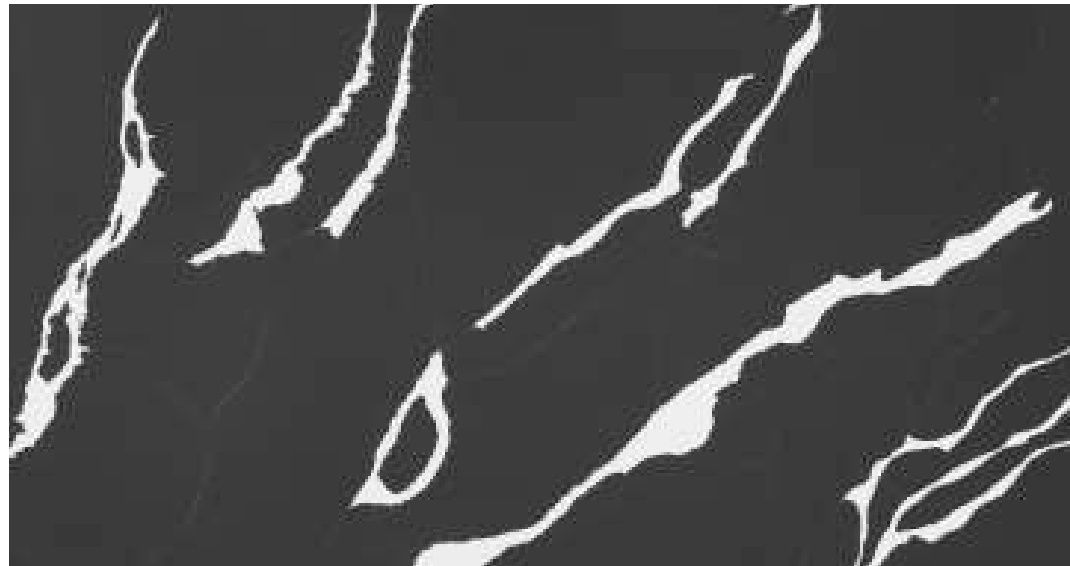


Pigalle Black



Opera Grey

Matisse White



Desert Brown





THE  
**TOKYO**  
COLLECTION

Kimono White >



ELEVATED LIVING  
**haique**



THE  
**TOKYO**  
COLLECTION

Minimal Zen meets the Surreal.

The Tokyo Collection is inspired by stark, functional lifestyle philosophies, that brings a sense of calm to living spaces.

Future colors will balance the zen with bolder Ginza-inspired designs.

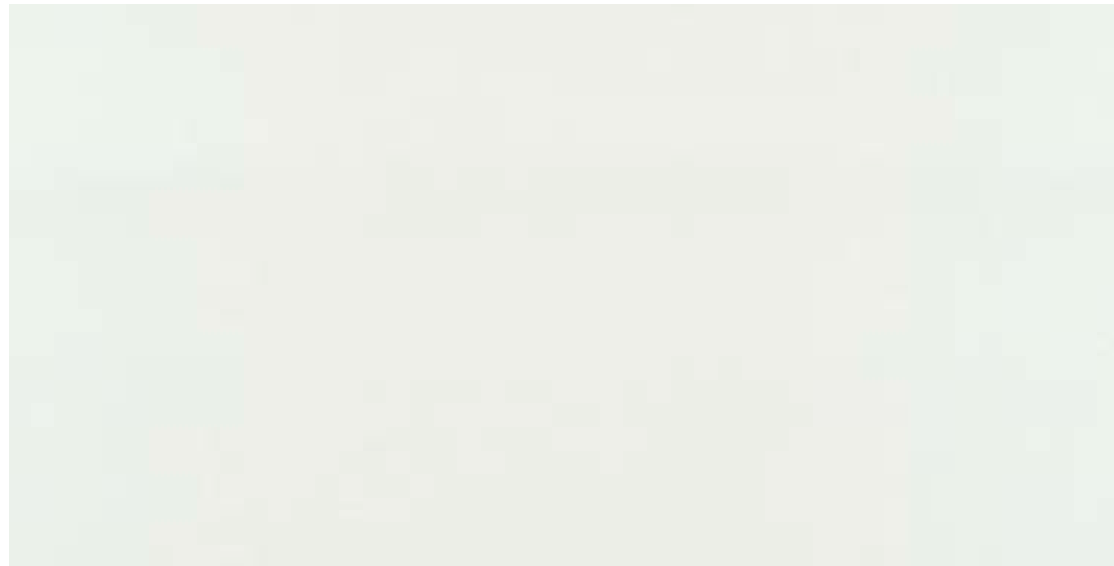


Fuji White

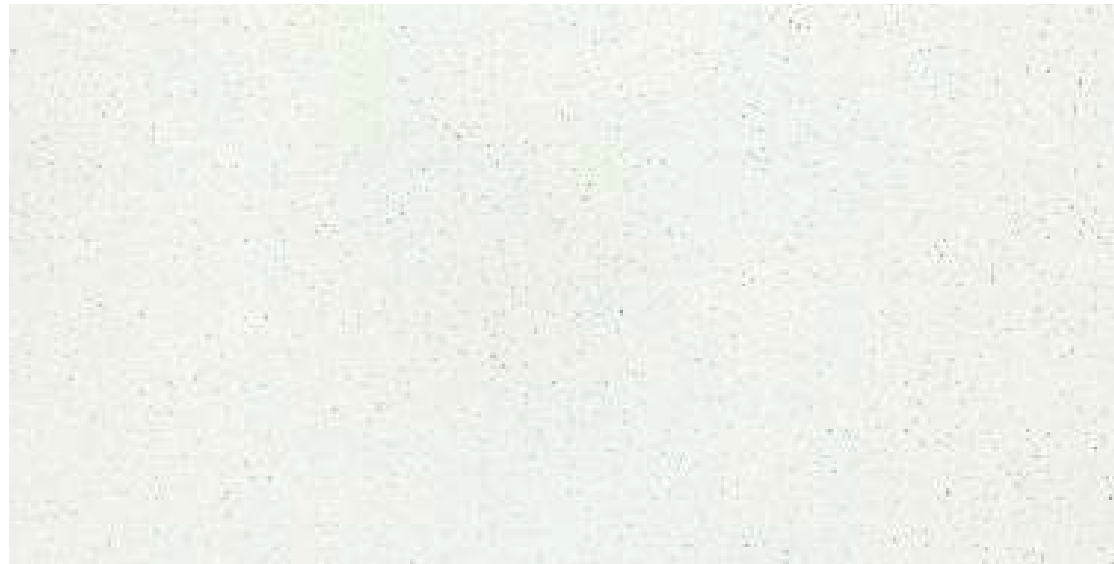


Hokkaido White

Edo White



Kimono White









Fuji White





# ABOUT US

Haique is the brainchild of Siddhanth Lunawath & Saumya Gattani, two young entrepreneurs who spotted a global need for affordable luxury products in the architectural interiors market.

**Saumya** (21) studied fashion from the prestigious London College of Fashion and the Nanyang Academy of Fine Arts, Singapore. She also worked with GQ and the designer duo Shantanu & Nikhil.

**Siddhanth** (23) studied Management from Indiana University and went on to understand the ropes of branding and advertising at Foote, Cone & Belding.

Haique Quartz was born out of a Joint Venture between their respective family businesses. The Aravali Group, a mining major, and The Gattani Group, a conglomerate with diversified interests across polymers to clean energy.

Haique is driven by the purpose of Enabling Elevated Living for people around the world by using cutting-edge technology, innovation in process, and design-led manufacturing.

# FINISHES



POLISHED, HONED, LEATHER, MATTE



10 Years Warranty



Scratch Resistant



Stain Resistant



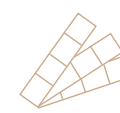
Heat Resistant



Easy Maintenance



Crack Resistant



Color Consistency

	Haique Stone	Granite	Laminate	Solid Surface
 10 Years Warranty	✓			
 Scratch Resistant	✓	✓		
 Stain Resistant	✓		✓	✓
 Heat Resistant	✓	✓		
 Resistant to many household chemicals , acids and solvents	✓			✓
 Low maintenance	✓			
 Nonabsorbent and Nonporous	✓			✓
 Mold and Mildew Resistant	✓			✓
 Color Consistency	✓		✓	✓





Engineered Quartz Surfaces by Haique offer the largest sizes of seamless slabs in the world. At 11.5 ft by 6.5 ft, our quartz surfaces are also available in various thickness of 15, 20, 30 mm.



Completely Automated Italian Plant Finishing line from **Breton** right from Loading, Trimming, Calibrating, Polishing and packing.



## Where stars of **nature** meets state-of-the-art **technology**

The manufacturing process begins with a rigorous inspection of all incoming raw materials. These are blended at a ratio of up to 93% natural quartz aggregates with pigments and polymer resins. Haique quartz surfaces are manufactured through a highly automated, yet strictly monitored process in a state of the art factory in Udaipur, Rajasthan.

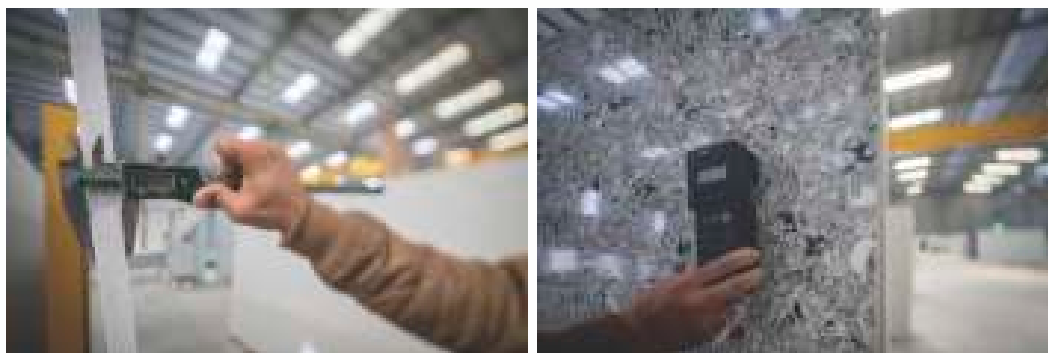
Set in an area of 6 Acres, the plant is a single unit of 100,000 sq.ft with a fully integrated setup that spans the entire process so as to maintain rigorous quality standards and a steady rate of throughput and productivity.





**Team & Unit**

A team of well trained and exceptionally motivated individuals working out of a 100,000 sq. ft state-of the art plant ensure that Haique's commitment to quality & timeliness are maintained.



**Quality Testing**

Every slab then undergoes rigorous quality testing to ensure it meets our extremely high standards of color, hue and consistency

# MEDIA PRESENCE

**NATIONAL HERALD**

**ARCHITECT**  
and INTERIORS INDIA

**Realty+**

**ZEEBUSINESS**

**mne**  
Mumbai News Express

**APN**

**Interior Exterior**  
THE MAGAZINE FOR INDIAN CONSTRUCTION INDUSTRIES

ELEVATED LIVING  
**haique**

 @haiquequartz

 @haiquequartz

 @haiquequartz

---

 [hello@haiquequartz.com](mailto:hello@haiquequartz.com)

---

ELEVATED LIVING

# haique

 +91-9116 65 22 15

[www.haiquequartz.com](http://www.haiquequartz.com)