

ELEVATED LIVING  
**haique**<sup>®</sup>

— Luxury Surfaces —


INTRODUCING  
**NEO**  
**MARBLE**  
FROM THE HOUSE OF HAIQUE

QUARTZ | NEO MARBLE | TERRAZZO



We Have Crossed Another  
Milestone As We Launch  
Our New Marble And  
Terazzo Surface Collection

[www.haiquequartz.com](http://www.haiquequartz.com)



"Haique brings the best of the world to India through its product profile. From the best machineries, best materials, best top surface smoothness to ensure a elevated living for your homes and workspaces."

- Siddhant Lunawath  
Co - Founder

## Founder's Desk



### Building a Global brand

We at Haique, believe in a relationship-based business, and our associate are the cornerstone to its success. We have high aspirations from our team, and they have accomplished them all. Our team members are passionate about their profession and are always keen to learn more about their customers' needs new technologies and concepts. We constantly strive to provide our customers with what they want, which includes:

Product quality above their expectation, world-class services, and great value for money. In the trust sense of the term, Haique is a designer's brand, instantly recognisable by its stunning inventive looks that have a class with originality in design aesthetics and the capacity to please the eye. The brand instils in the halo of accomplishment and status. our goal is to make Haique the unchallenged leader and the complete one-stop-shop for all kitchen counter tops, vanities and other interior solutions.

Haique is exporting its products to discerning clients across 30+ countries worldwide including the United States, the United Kingdom, Europe and the Gulf countries.

Haique surfaces are influenced by the global culture and human sentiment bringing together the finest design talent together with best in engineering & technology. Our Haique surfaces are created from top-grade quality raw materials and finished with Breton polish to give our surfaces an extra edge in terms of the quality of our slabs.

Our "Make in India" goal is widely acknowledged, with our products being shipped to most developed countries around the globe and Haique's commitment to excellence and customer satisfaction will always stand strong.

[www.haiquequartz.com](http://www.haiquequartz.com)

# About Us

ELEVATED LIVING  
**haique**<sup>®</sup>

— Luxury Surfaces —

IF YOU THOUGH STONE WAS ANCIENT, THINK AGAIN. HAIQUE IS THE FOREMOST FASHION BRAND FOR SURFACES, INSPIRED BY THE EVER-CHANGING GLOBAL CULTURE, COLOUR TRENDS, AND LIVING CHOICE. HAIQUE CREATES HIGH-END LUXURY SURFACES FOR A VARIETY OF TASTES AND STYLES. HAIQUE'S LUXURY SURFACES ARE THE WORLD'S LARGEST SEAMLESS SLABS, INFUSED WITH SPECTACULAR DESIGNS, COLOURS, AND PATTERNS. HAIQUE SURFACES ARE MADE TO ENHANCE LIFESTYLE AND TRANSFORM TABLE TOPS.

HAIQUE IS OWNED AND OPERATED BY ARAVALI GROUP, A MINING AND MINERAL CONGLOMERATE AND GATTANI GROUP A MULTI-FACETED CONGLOMERATE WITH PROMINENT PRESENCE IN POLYMERS AND CLEAN ENERGY. ARAVALI GROUP'S JOURNEY BEGAN 45 YEARS AGO WITH MINERAL EXTRACTION OF THE TREASURED ARAVALI ONYX MARBLE, SOAPSTONE & EXOTIC GRANITES. WITH THE CHANGING GLOBAL TRENDS, ARAVALI AND GATTANI GROUPS CHOSE TO JOIN HANDS TO FORAY INTO THE PRODUCTION OF QUARTZ & MARBLE SURFACES. TODAY, HAIQUE ALSO OPERATES ITS OWN QUARTZ MINES, QUARTZ GRITS AND POWDER PROCESSING PLANTS AS WELL AS A HIGHLY ADVANCED RESIN MANUFACTURING FACILITY. TO TOP IT ALL, A HIGHLY EFFICIENT TEAM OF TALENTED PEOPLE WHICH ALL COMBINED MAKES THE STRENGTH OF THE COMPANY UNMATCHABLE.





# THE COLLECTION

Inspired by the world's five fashion capitals New York, Tokyo, London, Paris, and Milan, we've instilled the soul of these cities into our fashionable and luxury surfaces. Our end-users enjoy the trend of segmenting our product line with fashionable cities based on their preferences.

[www.haiquequartz.com](http://www.haiquequartz.com)

# X E D I N

1



NEW YORK  
COLLECTION

2



TOKYO  
COLLECTION

3



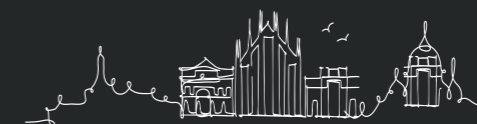
LONDON  
COLLECTION

4



PARIS  
COLLECTION

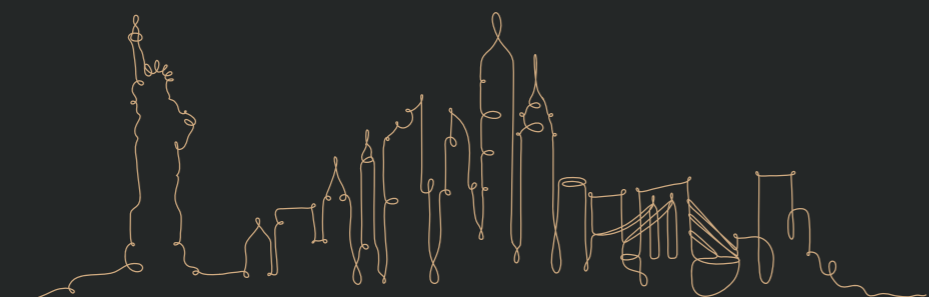
5



MILAN  
COLLECTION

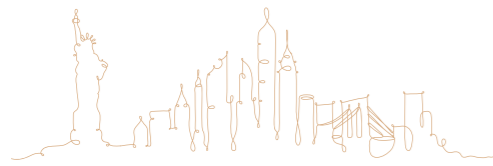
## NEW YORK COLLECTION

New York is undoubtedly one of the most well-known cities in the world. This dynamic metropolis is acclaimed for its luxury shops, spectacular Broadway musicals, and high-flying corporate tycoons. After researching about this city, we have deduced that New York is quite modern and functional. So here at Haique, we create such designs that match the vibe of this city. In this collection you will find modern and functional slab designs inspired by the new world's capital. We are depicting the nature of city life in our considerably functional products.



“Somewhere between living and dreaming, there is New York.”

[www.haiquequartz.com](http://www.haiquequartz.com)



**NEW YORK  
COLLECTION**



**Majestic Beige**  
Design Code: Hq-03  
Size: 3250 x 1650 mm (15mm)



**Lincoln White**  
Design Code: Hq-01  
Size: 3250 x 1650 mm (15mm)



**Majestic White**  
Design Code: Hq-02  
Size: 3250 x 1650 mm (15mm)

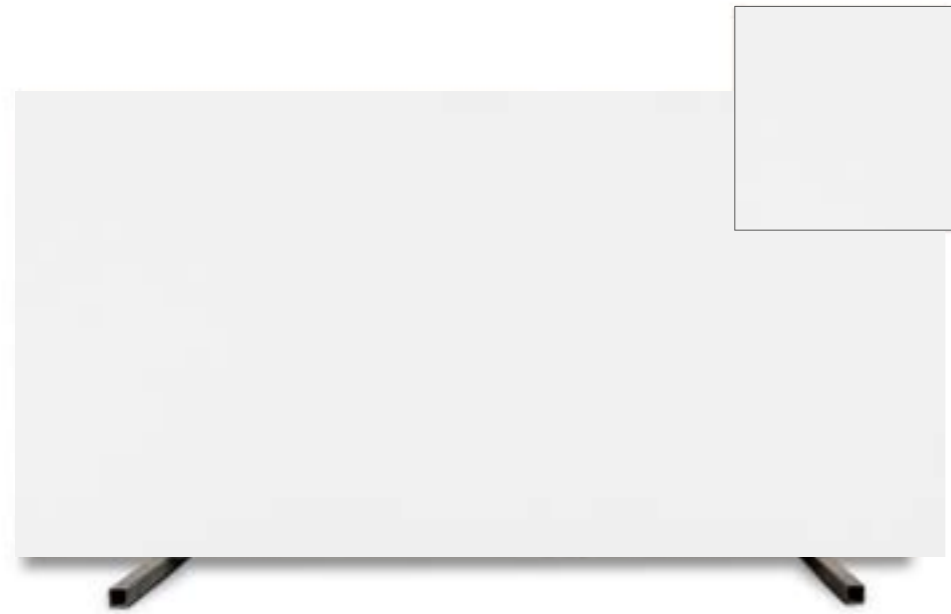
## TOKYO COLLECTION

Tokyo is one of the world's most influential fashion capitals, and several of its districts are noted for their particular aesthetics. Harajuku is where you'll find mind-bending fusions of traditional and modern designs. The city is a mix of the ultramodern and the traditional lives, from neon-lit skyscrapers to historic temples. In this collection of Haique, you will find the city's minimal, futuristic and fashionable take on its products. Haique's Tokyo collection is all about the amalgamation of minimalism with its take on modernity.



"Tokyo is not just a city,  
it is a world."

[www.haiquequartz.com](http://www.haiquequartz.com)



**Abe White**  
Design Code: Hq-06  
Size: 3250 x 1650 mm (15mm)



**Osaka Grey**  
Design Code: Hq-04  
Size: 3250 x 1650 mm (15mm)



**Akai Concrete**  
Design Code: Hq-07  
Size: 3250 x 1650 mm (15mm)



**Kyoto Beige**  
Design Code: Hq-05  
Size: 3250 x 1650 mm (15mm)





**Ginza White**  
Design Code: Hq-08  
Size: 3250 x 1650 mm (15mm)



**Shinzo Cream**  
Design Code: Hq-09  
Size: 3250 x 1650 mm (15mm)

## LONDON COLLECTION

London is a significant player in the fashion industry and has rightfully earned its place as one of the essential iconic fashion hubs in the world. London is home to some of the most successful British high-end fashion designers. They are an inspiration to us with their timeless and classic designs. While designing this collection, we kept in mind the colourful streets of Notting Hill. We have tried to incorporate the lifestyle of this fashionable city in our collection, like the perfect finish with classic colours and timeless designer slabs.

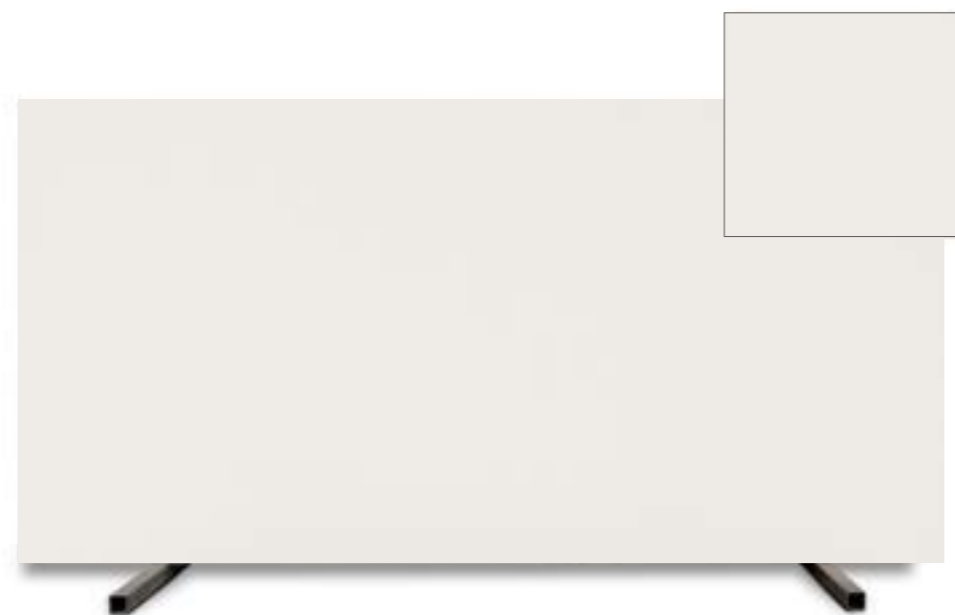


“A bad day in London is still better than a good day anywhere else.”

[www.haiquequartz.com](http://www.haiquequartz.com)



LONDON  
COLLECTION



**James White**  
Design Code: Hq-13  
Size: 3250 x 1650 mm (15mm)



**Moira Ice**  
Design Code: Hq-10  
Size: 3250 x 1650 mm (15mm)



**Picadally White / Picadally Beige**  
Design Code: Hq-11 / Hq-12  
Size: 3250 x 1650 mm (15mm)

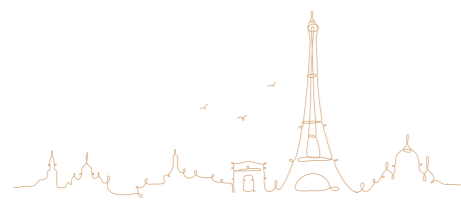
PARIS  
COLLECTION

Why is Paris the fashion hub of the world today? Simply because, despite the decrease in the number of couture houses, little has changed. Haique retains the same spark of Paris in its products. Inspired by the city's avant-garde fashion houses, we have set the global benchmark for designs. We are developing designer slabs inspired by the city's high-end fashion houses. We have tried to retain the city fashion in our slabs by incorporating its trendy and timeless designs.



“Paris exists to remind us that all our dreams are real.”

[www.haiquequartz.com](http://www.haiquequartz.com)



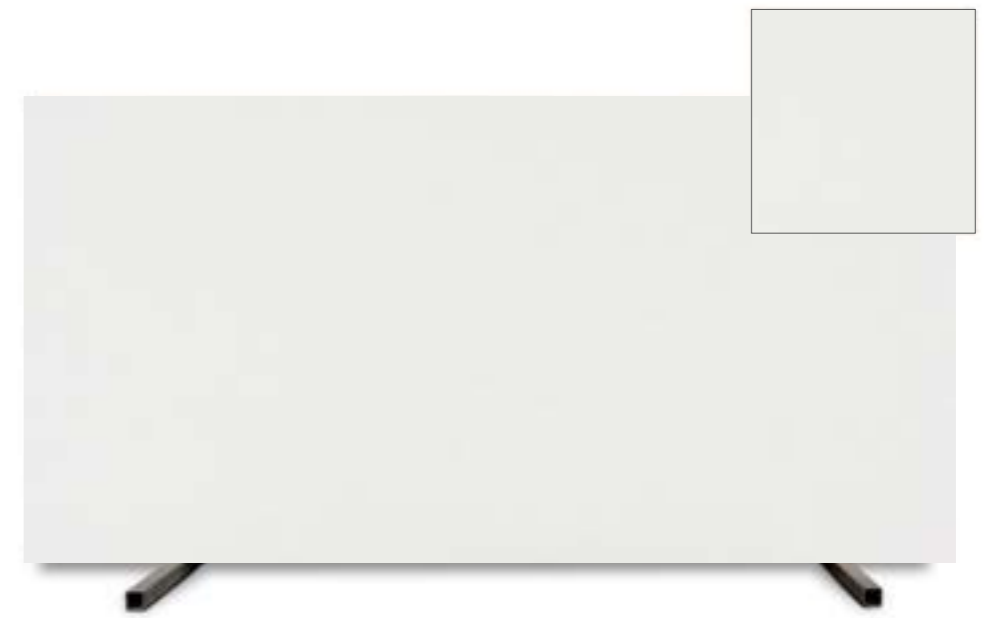
PARIS  
COLLECTION



**Troadero Carara**  
Design Code: Hq-16  
Size: 3250 x 1650 mm (15mm)



**Mont Blanc**  
Design Code: Hq-17  
Size: 3250 x 1650 mm (15mm)



**Lyon White**  
Design Code: Hq-14  
Size: 3250 x 1650 mm (15mm)



**Luxembourg Grey**  
Design Code: Hq-15  
Size: 3250 x 1650 mm (15mm)



PARIS  
COLLECTION



**Agora Beige**  
Design Code: Hq-20  
Size: 3250 x 1650 mm (15mm)



**Camellias**  
Design Code: Hq-18  
Size: 3250 x 1650 mm (15mm)



**Emprador Brown**  
Design Code: Hq-21  
Size: 3250 x 1650 mm (15mm)



**Magnus Beige**  
Design Code: Hq-19  
Size: 3250 x 1650 mm (15mm)



**Topaz Cream**  
Design Code: Hq-24  
Size: 3250 x 1650 mm (15mm)



**Savoy Grey**  
Design Code: Hq-22  
Size: 3250 x 1650 mm (15mm)



**Garnet Beige**  
Design Code: Hq-25  
Size: 3250 x 1650 mm (15mm)



**Belgium Beige**  
Design Code: Hq-23  
Size: 3250 x 1650 mm (15mm)



**Abyss White**  
Design Code: Hq-26  
Size: 3250 x 1650 mm (15mm)

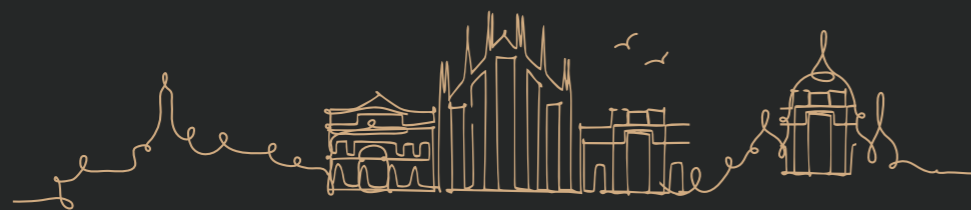


**Clara Crema**  
Design Code: Hq-27  
Size: 3250 x 1650 mm (15mm)



## MILAN COLLECTION

Milan is the only city that truly deserves the title of "fashion capital of the world". This cosmopolitan city incorporates luxury, art, food, and culture. It's the ideal location for fashionistas and industry enthusiasts. We, at Haique, take direct inspiration from the atelier led classic fashion. The slabs from this collection are all about the amalgamation of the city's renaissance period and modern era. We have tried to fuse the city's art and culture in our slabs for a more authentic look.



"You don't need the universe,  
if you have Milan."

[www.haiquequartz.com](http://www.haiquequartz.com)



MILAN  
COLLECTION



**Glacier White**  
Design Code: Hq-28  
Size: 3250 x 1650 mm (15mm)



**Glacier Grey**  
Design Code: Hq-29  
Size: 3250 x 1650 mm (15mm)

ELEVATED LIVING  
**haique**<sup>®</sup>

— Luxury Surfaces —

QUARTZ | NEO MARBLE | TERRAZZO

THE LEGACY OF



[www.haiquequartz.com](http://www.haiquequartz.com)

ESPRIT STONES PRIVATE LIMITED

**Factory:**

Haique Stones Private Limited  
Khasra No / Araj 1958  
Village - Rathujanagadiya Ahead  
Of Negadiya Toll Plaza  
Udaipur Nathdwara Highway  
Teh.-delwara, District- Rajsamand  
Rajasthan

**Registered Office:**

SP-1, Udhyog Vihar  
Sukher Industrial Area  
Udaipur - 313004  
Rajasthan, India  
Phone: +91 91166 52215

Khasra No. 1106 to 1109,  
Kukdeshwar Mahdev Road  
Lakhawali, Udaipur - 313011  
Rajasthan, India  
Email: [hello@haiquequartz.com](mailto:hello@haiquequartz.com)

**Mumbai Office:**

12, Midas, Sahar Plaza Compl  
J.B. Nagar, Andheri  
East Mumbai - 400 059, Indi  
Phone: 022 4014 8324  
Email: [mumbai@haiquequartz.c](mailto:mumbai@haiquequartz.c)

**Branch Offices:**

Delhi: +91 91166 52342 | Nagpur: +91 91166 52342 | Kolkata: +91 89059 95971  
Bangalore: +91 89059 95972 | Hyderabad: +91 89059 95974 | Ahmedabad: +91 89059 95975

More Colours And Surfaces  
To Be Launched Soon.

Stay Tuned.

**Accreditations**



[www.haiquequartz.com](http://www.haiquequartz.com)